

Bid Date -

** ESTIMATING BAR LIST **

LINE	LA	EP	A/D	STRUCTURE	MULT	REQ	CODE	+	X	QTY	SZ/GR	LENGTH	B	COMMENT	LINE LB
63															
64				CONCRETE PIER			CONCRETE PIER								
65	REF.SHEET = S-103														
66	MARK-P1 TO P4														
67	LOCATION = (259 LOC.)														
68									259	10	#6	23-04	H	10-#6 VERT	90771
69									259	31	#4	16-04	L	#4 @8" TIES	87602
70															
71				PILE CAP			PILE CAP								
72	MARK = PC-1														
73	REF.SHEET (S-900 & S-102)(7 -LOC)														
74						7			2	31	#8	18-04	H	#8 @6½" EW BOT	21244
75						7			2	31	#6	18-04	H	#6 @6½" EW TOP	11951
76						7				44	#4	4-01	L	#4 @9" LINKS	840
77	MARK = PC-2A														
78	REF.SHEET (S-900 & S-102)(6 -LOC)														
79						6			3	9	#11	19-00	H	#11 @5" 3 WAY BOT	16353
80						6			2	24	#6	15-07	H	#6 @8" EW TOP	6741
81						6			65	2	#4	3-10	L	2-#4 @9" LINKS	1997
82	MARK = PC-2														
83	REF.SHEET (S-900 & S-102)(2 -LOC)														
84						2			3	9	#11	20-00	H	#11 @5" 3 WAY BOT	5738
85						2			2	26	#6	16-05	H	#6 @8" EW TOP	2564
86						2			65	2	#4	3-10	L	2-#4 @9" LINKS	666
87	MARK = PC-3A														
88	REF.SHEET (S-900 & S-102)(1 -LOC)														
89									3	9	#11	20-00	H	#11 @5" 3 WAY BOT	2869
90									2	30	#6	16-05	H	#6 @8" EW TOP	1479
91									70	2	#4	3-10	L	2-#4 @9" LINKS	358
92	MARK = PC-3														
93	REF.SHEET (S-900 & S-102)(20 -LOC)														

Bid Date -

** ESTIMATING BAR LIST **

LINE	LA	EP	A/D	STRUCTURE	MULT	REQ	CODE	+	X	QTY	SZ/GR	LENGTH	B	COMMENT	LINE LB
94						20			3	9	#11	20-00	H	#11 @5" 3 WAY BOT	57380
95						20			2	30	#6	16-05	H	#6 @8" EW TOP	29589
96						20			70	2	#4	3-10	L	2-#4 @9" LINKS	7170
97 MARK = PC-4A															
98 REF.SHEET (S-900 & S-102)(6 -LOC)															
99						6			3	9	#11	18-00	H	#11 @5" 3 WAY BOT	15493
100						6			2	28	#6	14-09	H	#6 @8" EW TOP	7444
101						6			65	2	#4	3-04	L	2-#4 @9" LINKS	1737
102 MARK = PC-4															
103 REF.SHEET (S-900 & S-102)(4 -LOC)															
104						4			3	9	#11	18-00	H	#11 @5" 3 WAY BOT	10328
105						4			2	28	#6	14-09	H	#6 @8" EW TOP	4963
106						4			65	2	#4	3-04	L	2-#4 @9" LINKS	1158
107 MARK = PC-5															
108 REF.SHEET (S-900 & S-102)(7 -LOC)															
109						7			2	7	#8	39-00	H	#8 @12" LW T&B	10205
110						7			2	41	#8	8-04	H	#8 @12" SW T&B	12772
111						7			50	8	#4	4-01	L	#4 @9" LINKS	7637
112 MARK = PC-6															
113 REF.SHEET (S-900 & S-102)(6 -LOC)															
114						6			2	7	#8	30-04		#8 @12" LW T&B	6803
115						6			2	30	#8	8-04	H	#8 @12" SW T&B	8010
116						6			38	8	#4	4-01	L	#4 @9" LINKS	4975
117 MARK = PC-6A															
118 REF.SHEET (S-900 & S-102)(6 -LOC)															
119						6			2	7	#8	20-04	H	#8 @12" LW T&B	4560
120						6			2	20	#8	8-00	H	#8 @12" SW T&B	5126
121						6			25	8	#4	4-01	L	#4 @9" LINKS	3273
122 MARK = PC-7															
123 REF.SHEET (S-900 & S-102)(6 -LOC)															
124						6			2	29	#8	18-04	H	#8 @7" EW BOT	17035

Bid Date -

** ESTIMATING BAR LIST **

LINE	LA	EP	A/D	STRUCTURE	MULT	REQ	CODE	+	X	QTY	SZ/GR	LENGTH	B	COMMENT	LINE LB
125						6			2	29	#8	18-04	H	#6 @7" EW TOP	17035
126						6				44	#4	4-01	L	#4 @9" LINKS	720
127 MARK = PC-8															
128 REF.SHEET (S-900 & S-102)(20 -LOC)															
129						20				7	#9	17-02	H	#9 @12" LW BOT	8171
130						20				15	#9	9-02	H	#9 @12" SW BOT	9350
131						20				7	#6	16-00	H	#6 @12" LW TOP	3364
132						20				22	#6	8-00	H	#6 @12" SW TOP	5287
133						20			22	8	#4	4-01	L	#4 @9" LINKS	9601
134 MARK = PC-9															
135 REF.SHEET (S-900 & S-102)(1 -LOC)															
136									2	7	#8	48-07	H	#8 @12" LW T&B	1816
137									2	42	#8	8-04	H	#8 @12" SW T&B	1869
138									55	8	#4	4-01	L	#4 @9" LINKS	1200
139															
140 PEDESTAL CONCRETE PEDESTAL															
141 MARK = PED-1															
142 REF.SHEET (5/S-104)(38 -LOC)															
143						38				12	#6	5-06	H	12-#6 VERT	3767
144						38				4	#4	10-00	L	#4 @8" TIES	1015
145						38			4	4	#5	5-10	H	4-#5 HAIRPIN	3699
146						38				2	#5	7-00	H	2-#5 ADDL BENT	555
147 MARK = PED-1A															
148 REF.SHEET (5/S-104)(7 -LOC)															
149						7				12	#6	5-03	H	12-#6 VERT	662
150						7				6	#4	10-00	L	#4 @8" TIES	281
151						7			4	6	#5	5-10	H	4-#5 HAIRPIN	1022
152						7				2	#5	7-00	H	2-#5 ADDL BENT	102
153 MARK = PED-1B															
154 REF.SHEET (5/S-104)(1 -LOC)															
155										12	#6	7-02	H	12-#6 VERT	129

Bid Date -

** ESTIMATING BAR LIST **

LINE	LA	EP	A/D	STRUCTURE	MULT	REQ	CODE	+	X	QTY	SZ/GR	LENGTH	B	COMMENT	LINE LB
156										9	#4	10-00	L	#4 @8" TIES	60
157									4	9	#5	5-10	H	4-#5 HAIRPIN	219
158										2	#5	7-00	H	2-#5 ADDL BENT	15
159 MARK = PED-1C															
160 REF.SHEET (5/S-104)(5 -LOC)															
161						5				12	#6	5-06	H	12-#6 VERT	496
162						5				7	#4	10-00	L	#4 @8" TIES	234
163						5			4	7	#5	5-10	H	4-#5 HAIRPIN	852
164						5				2	#5	7-00	H	2-#5 ADDL BENT	73
165 MARK = PED-2															
166 REF.SHEET (10/S-104)(7 -LOC)															
167						7				8	#6	2-00		8-#6 VERT	168
168						7				4	#4	10-00	L	#4 @12" TIES	187
169						7			2	4	#5	5-10	H	#4 @12" LINKS	341
170															
171 CONCRETE BEAM CONCRETE BEAM															
172 RAIL BEAM FOUNDATION															
173 REF.SHEET = 4/S-302															
174 MARK = B1 (320 LFT)															
175									10	3	#7	40-00		3-#7 CONT TOP	2453
176									10	5	#7	40-00		5-#7 CONT BOT	4088
177										401	#4	8-08	L	#4 @9" STIRR	2322
178									2	401	#4	4-05	L	#4 @9" DWL ES	2366
179															
180 FFE FOUNDATION															
181 REF.SHEET = 4/S-301															
182 MARK = B2 (550 LFT)															
183									17	3	#7	40-00		3-#7 CONT TOP	4170
184									17	5	#6	40-00		5-#6 CONT BOT	5107
185										730	#4	8-08	L	#4 @9" STIRR	4226
186									2	730	#4	4-05	L	#4 @9" DWL ES	4307

Bid Date -

**** ESTIMATING BAR LIST ****

LINE	LA	EP	A/D	STRUCTURE	MULT	REQ	CODE	+	X	QTY	SZ/GR	LENGTH	B	COMMENT	LINE LB
187															
188	SEMIGANTRY RAIL FOUNDATION														
189	REF.SHEET = 3/S-303														
190	MARK = B3 (980 LFT)														
191									30	4	#8	40-00		4-#8 CONT TOP	12816
192									30	5	#8	40-00		5-#8 CONT BOT	16020
193										1260	#4	10-04	L	#4 @9" STIRR	8697
194									2	1260	#4	5-00	L	#4 @9" DWL ES	8417
195															
196	AREA G3							AREA G3 (S300)							
197	REF. SHEET(2/S-300) (207 LFT)														
198	24" THICK SLAB														
199	AREA = 1970 SQ.FT														
200									2	145	#6	40-00		#6 @10" EW T&B	17423
201										126	#4	7-08	L	#4 @48" STANDEE	645
202									5	2	#6	40-00		2-#6 CONT	601
203									2	2	#6	7-02	H	2-#6 COR	43
204										250	#6	7-00	H	#6 @10" BENT	2629
205										95	#4	5-00	L	#4 @12" U-BAR	317
206															
207	OFFICE AREA							OFFICE AREA (S-304)							
208	REF. SECTION(4&5/S-304) (734 LFT)														
209						20			2	2	#6	40-00		2-#6 CONT T&B	4806
210						13			2	2	#6	7-02	H	2-#6 COR T&B	560
211										740	#3	8-08	L	#3 @12" STIRR	2411
212	REF. SECTION(6/S-304) (207 LFT)														
213									6	6	#7	40-00		6-#7 CONT BOT	2943
214									2	6	#7	10-06	H	6-#7 COR BOT	258
215									6	4	#7	40-00		4-#7 CONT TOP	1962
216									2	4	#7	10-06	H	4-#7 COR TOP	172
217										210	#4	12-00	L	#4 @12" STIRR	1683

Bid Date -

**** ESTIMATING BAR LIST ****

LINE	LA	EP	A/D	STRUCTURE	MULT	REQ	CODE	+	X	QTY	SZ/GR	LENGTH	B	COMMENT	LINE LB
218										210	#4	8-05	L	#4 @12" STIRR	1181
219															
220	6" THICK SLAB														
221	MESH TYPE = 8"x8"x-W9xW9														
222	SHEET SIZE = 20'-0"x8'-0"														
223	AREA = 4800 SQ.FT														
224	NO OF SHEETS = 36 NO'S														
225															
226	BREAK ROOM							BREAK ROOM (S-305)							
227	REF. SECTION(3/S-305) (210 LFT)														
228						6			2	2	#4	40-00		2-#4 CONT T&B	641
229						8			2	2	#4	4-10	L	2-#4 COR T&B	103
230										145	#3	6-00	L	#3 @18" STIRR	327
231															
232	6" THICK SLAB														
233	MESH TYPE = 8"x8"x-W9xW9														
234	SHEET SIZE = 20'-0"x8'-0"														
235	AREA = 1340 SQ.FT														
236	NO OF SHEETS = 10 NO'S														
237															
238	LOADING DOCK							LOADING DOCK / RAMP							
239	REF.SHEET = 2/S-306 (100 LFT)														
240					3				2	7	#4	40-00		#4 @12" CONT T&B	1122
241									2	105	#6	8-06	H	#6 @12" TRANS T&B	2681
242										50	#4	6-08	L	#4 @48" STANDEE	223
243									2	35	#6	6-01	H	#6 @12" DWL EF	640
244									2	35	#6	7-09		#6 @12" VERT EF	815
245									2	23	#6	6-00	H	#6 @12" D/V EF	415
246									2	9	#4	40-00		#4 @12" HOR EF	481
247									2	5	#4	25-00		#4 @12" HOR EF	167
248															

Bid Date -

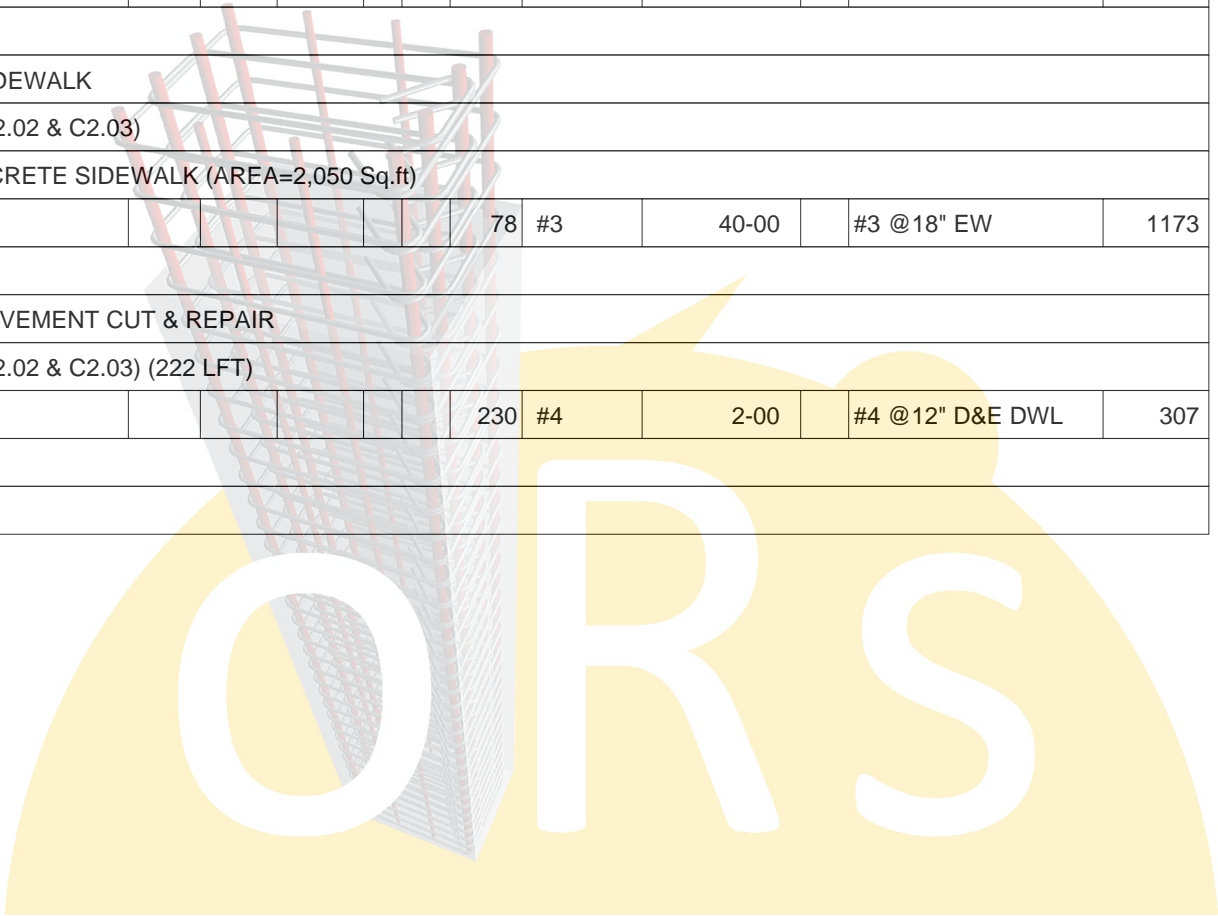
** ESTIMATING BAR LIST **

LINE	LA	EP	A/D	STRUCTURE	MULT	REQ	CODE	+	X	QTY	SZ/GR	LENGTH	B	COMMENT	LINE LB
249 REF.SHEET = 4/S-306 (15 LFT)															
250									2	18	#6	4-00		#6 @12" DWL EF	216
251									2	18	#6	5-00		#6 @12" VERT EF	270
252										18	#6	5-00	H	#6 @12" DWL TOP	135
253									2	6	#4	15-00		#4 @12" HOR EF	120
254															
255 SLAB ON GRADE															
256 REF.SHEET = 2/S-306 (100 LFT)															
257									3	2	#5	40-00		2-#5 CONT	250
258										105	#5	3-04	H	#5 @12" DWL	365
259															
260 8" THICK SALB															
261 AREA = 150 SQ.FT															
262										15	#5	40-00		#5 @12" EW	626
263															
264	CONC. SLAB					CONCRETE SLAB (S-101)									
265 8" THICK SLAB															
266 AREA = 67530 SQ.FT															
267										3725	#5	40-00		#5 @12" EW TOP	155407
268															
269 FLOOR BOX															
270 REF. SECTION(4/S-101) (11-LOC.)															
271						11			2	6	#5	5-00		#5 @12" EW	688
272						11				12	#5	7-00	H	#5 @12" BENT	964
273						11			4	5	#5	5-00		#5 @12" HOR	1147
274															
275	SITWORK					SITWORK									
276 CONCRETE PAVEMENT															
277 REF. SHEET(C2.02)															
278 5" THICK CONCRETE PAVEMENT (AREA=9,395 Sq.ft)															
279										338	#3	40-00		#3 @18" EW	5084

Bid Date -

** ESTIMATING BAR LIST **

LINE	LA	EP	A/D	STRUCTURE	MULT	REQ	CODE	+	X	QTY	SZ/GR	LENGTH	B	COMMENT	LINE LB
280	6" THICK CONCRETE PAVEMENT (AREA=22,955 Sq.ft)														
281										818	#3	40-00		#3 @18" EW	12303
282	7" THICK CONCRETE PAVEMENT (AREA=4,445 Sq.ft)														
283										162	#3	40-00		#3 @18" EW	2436
284	8" THICK CONCRETE PAVEMENT (AREA=86,245 Sq.ft)														
285										3055	#3	40-00		#3 @18" EW	45947
286															
287	CONCRETE SIDEWALK														
288	REF. SHEET(C2.02 & C2.03)														
289	4" THICK CONCRETE SIDEWALK (AREA=2,050 Sq.ft)														
290										78	#3	40-00		#3 @18" EW	1173
291															
292	CONCRETE PAVEMENT CUT & REPAIR														
293	REF. SHEET(C2.02 & C2.03) (222 LFT)														
294										230	#4	2-00		#4 @12" D&E DWL	307
295															
296															



Bid Date -

**** TOTALS PAGE (LBS) ****

CONCRETE PIERSTRUCTURE TOTAL ----- STRAIGHT ----- LIGHT BENT ----- HEAVY BENT ----- STOCK/MILL -----										
SIZE	%	Weight	%	Weight	%	Weight	%	Weight	%	Weight
#4 Gr 60	100	87,602			100	87,602				
#6 Gr 60	100	90,771					100	90,771		
Average Lbs per Linear Feet = .9311					Average Rebar Size = 5.02					
Total 89.2 Tons	100	178,373			49	87,602	51	90,771		

PILE CAP STRUCTURE TOTAL ----- STRAIGHT ----- LIGHT BENT ----- HEAVY BENT ----- STOCK/MILL -----										
SIZE	%	Weight	%	Weight	%	Weight	%	Weight	%	Weight
#4 Gr 60	100	41,332			100	41,332				
#6 Gr 60	100	73,382					100	73,382		
#8 Gr 60	100	106,475	6	6,803			94	99,672		
#9 Gr 60	100	17,521					100	17,521		
#11 Gr 60	100	108,161					100	108,161		
Average Lbs per Linear Feet = 1.9695					Average Rebar Size = 8.09					
Total 173.5 Tons	100	346,871	2	6,803	12	41,332	86	298,736		

PEDESTAL STRUCTURE TOTAL ----- STRAIGHT ----- LIGHT BENT ----- HEAVY BENT ----- STOCK/MILL -----										
SIZE	%	Weight	%	Weight	%	Weight	%	Weight	%	Weight
#4 Gr 60	100	1,777			100	1,777				
#5 Gr 60	100	6,878					100	6,878		
#6 Gr 60	100	5,222	3	168			97	5,054		
Average Lbs per Linear Feet = 1.0900					Average Rebar Size = 5.25					
Total 7.0 Tons	100	13,877	1	168	13	1,777	86	11,932		

Bid Date -

**** TOTALS PAGE (LBS) ****

CONCRETE BEAM STRUCTURE TOTAL -----										
SIZE	%	Weight	%	Weight	%	Weight	%	Weight	%	Weight
#4 Gr 60	100	30,335			100	30,335				
#6 Gr 60	100	5,107	100	5,107						
#7 Gr 60	100	10,711	100	10,711						
#8 Gr 60	100	28,836	100	28,836						
Average Lbs per Linear Feet = 1.1563					Average Rebar Size = 6.10					
Total 37.5 Tons	100	74,989	60	44,654	40	30,335				

AREA G3 STRUCTURE TOTAL -----										
SIZE	%	Weight	%	Weight	%	Weight	%	Weight	%	Weight
#4 Gr 60	100	962			100	962				
#6 Gr 60	100	20,696	87	18,024			13	2,672		
Average Lbs per Linear Feet = 1.4231					Average Rebar Size = 5.91					
Total 10.9 Tons	100	21,658	83	18,024	4	962	12	2,672		

OFFICE AREA STRUCTURE TOTAL -----										
SIZE	%	Weight	%	Weight	%	Weight	%	Weight	%	Weight
#3 Gr 60	100	2,411			100	2,411				
#4 Gr 60	100	2,864			100	2,864				
#6 Gr 60	100	5,366	90	4,806			10	560		
#7 Gr 60	100	5,335	92	4,905			8	430		
Average Lbs per Linear Feet = .9463					Average Rebar Size = 5.52					
Total 8.0 Tons	100	15,976	61	9,711	33	5,275	6	990		

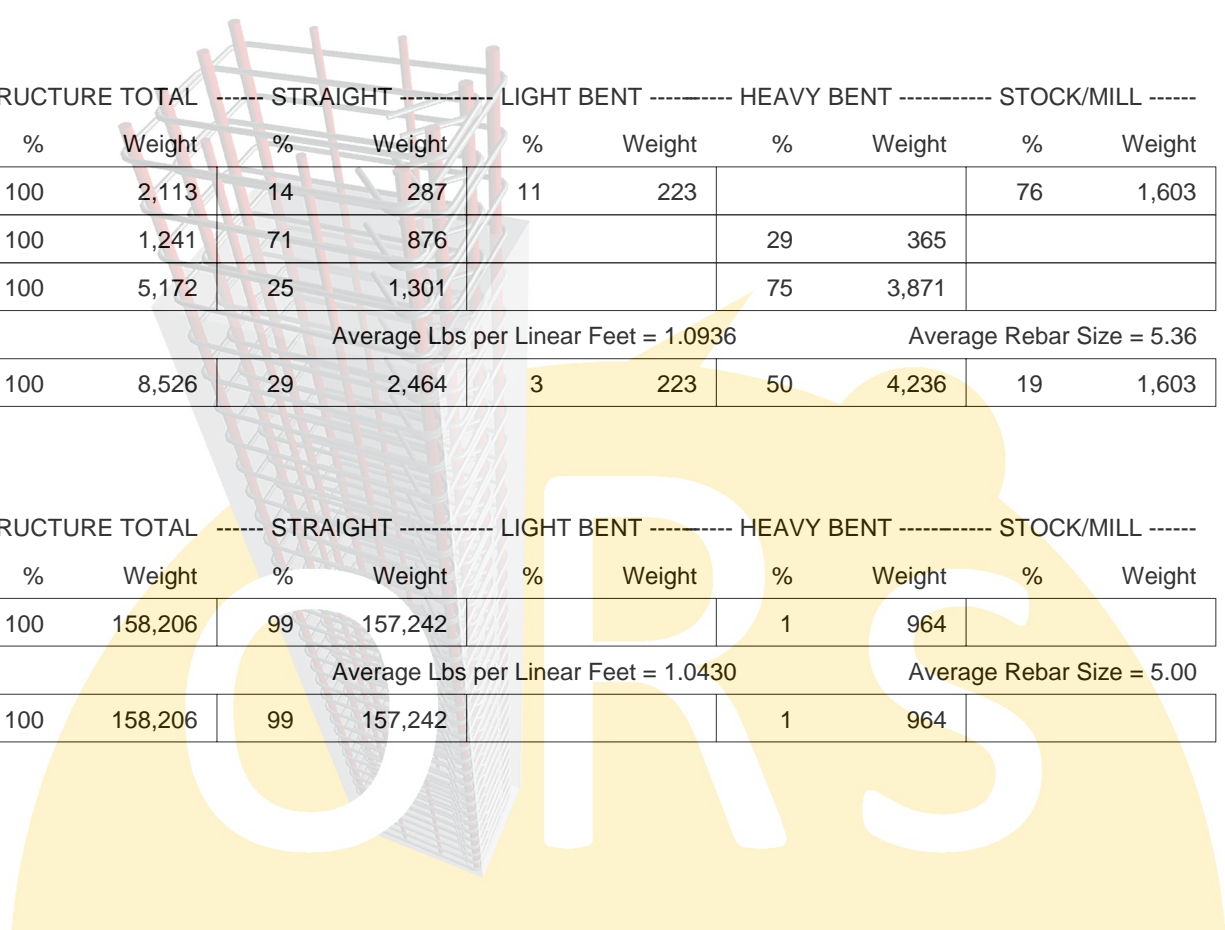
Bid Date -

**** TOTALS PAGE (LBS) ****

BREAK ROOM	STRUCTURE TOTAL		STRAIGHT		LIGHT BENT		HEAVY BENT		STOCK/MILL	
SIZE	%	Weight	%	Weight	%	Weight	%	Weight	%	Weight
#3 Gr 60	100	327			100	327				
#4 Gr 60	100	744			14	103			86	641
Average Lbs per Linear Feet = .5400					Average Rebar Size = 3.69					
Total .6 Tons	100	1,071			40	430			60	641

LOADING DOCK	STRUCTURE TOTAL		STRAIGHT		LIGHT BENT		HEAVY BENT		STOCK/MILL	
SIZE	%	Weight	%	Weight	%	Weight	%	Weight	%	Weight
#4 Gr 60	100	2,113	14	287	11	223			76	1,603
#5 Gr 60	100	1,241	71	876			29	365		
#6 Gr 60	100	5,172	25	1,301			75	3,871		
Average Lbs per Linear Feet = 1.0936					Average Rebar Size = 5.36					
Total 4.3 Tons	100	8,526	29	2,464	3	223	50	4,236	19	1,603

CONC. SLAB	STRUCTURE TOTAL		STRAIGHT		LIGHT BENT		HEAVY BENT		STOCK/MILL	
SIZE	%	Weight	%	Weight	%	Weight	%	Weight	%	Weight
#5 Gr 60	100	158,206	99	157,242			1	964		
Average Lbs per Linear Feet = 1.0430					Average Rebar Size = 5.00					
Total 79.2 Tons	100	158,206	99	157,242			1	964		



Bid Date -

**** TOTALS PAGE (LBS) ****

SITework	STRUCTURE TOTAL		STRAIGHT		LIGHT BENT		HEAVY BENT		STOCK/MILL	
SIZE	%	Weight	%	Weight	%	Weight	%	Weight	%	Weight
#3 Gr 60	100	66,943							100	66,943
#4 Gr 60	100	307	100	307						
Average Lbs per Linear Feet = .3768					Average Rebar Size = 3.00					
Total 33.7 Tons	100	67,250		307					100	66,943

GRAND TOTALS	TOTAL		STRAIGHT		LIGHT BENT		HEAVY BENT		STOCK/MILL	
SIZE	%	Weight	%	Weight	%	Weight	%	Weight	%	Weight
#3 Gr 60	100	69,681			4	2,738			96	66,943
#4 Gr 60	100	168,036		594	98	165,198			1	2,244
#5 Gr 60	100	166,325	95	158,118			5	8,207		
#6 Gr 60	100	205,716	14	29,406			86	176,310		
#7 Gr 60	100	16,046	97	15,616			3	430		
#8 Gr 60	100	135,311	26	35,639			74	99,672		
#9 Gr 60	100	17,521					100	17,521		
#11 Gr 60	100	108,161					100	108,161		
Average Lbs per Linear Feet = 1.0850					Average Rebar Size = 6.19					
Total 443.4 Tons	100	886,797	27	239,373	19	167,936	46	410,301	8	69,187

